



NEWSLETTER 12

Dear Reader,

This newsletter presents progress up to end of **December 2004**, and is primarily intended for people involved in the project and might not give a complete picture of the project. The Newsletter is also found on the Buffalo City Intranet.

Please also note that the Newsletter has an informal character and that the content does not imply official endorsement by the Local Authority of Buffalo City (BCM).

If you have ideas or questions about the project, please contact christer.kjorneberg@swedesurvey.se or kjorneberg@hotmail.com

Happy New Year!

We certainly hope that your 2004 has been eventful in a positive way that it will remain in your memory as mostly a happy year. And whatever 2004 has been for you, We truly hope that 2005 will be better!



PROGRESS REPORT

In December 2004 the Project was evaluated. A Progress Report has been prepared which follows the table of contents of the Strategy paper that was approved by the Council in April 2002 and presents a summary of achievements and documentations, issues of concern and some recommendations and findings for the future. The report concludes that the most important limitations and obstacles to the operational use of GIS are not of a technical nature. They are rather institutional, organisational, procedural, and information quality issues. To alleviate these obstacles, there should be a strategy dealing with institutional mandates and linkages, human skills development, technology strategies and financial management as well as 'traditional' GIS issues such as data and applications. Therefore, in order to get to a sustainable municipal GIS all the 'big GIS five' (Hardware, software, application, staff and

data) have to be looked into.

The findings in the report accompanied with considerable views and opinions, which have been heard from the stakeholders during a Top Management Seminar that was held in November, 2004, give the picture that the Project has been well received and appreciated. Advocacy, coordination efforts, training, data capturing and applications preparations have conspired to facilitate the daily work among BCM staff and politicians. The GIS development has also been recognised internationally as Buffalo City Council has been selected to receive a 'Special Achievement in GIS' award at ESRI's 24th Annual User Conference 2004. This award is given to users around the world in recognition of their outstanding work in the GIS field. All of us who have been working with the project feel proud to receive this attentiveness and appreciation.

However, although GIS has established itself as an integral and corporative part of the BCM organisation, a sustained situation is not yet at hand. Experiences from Swedish municipalities show that the establishment of a sustained corporate municipal GIS is a lengthy process and a period of 10 to 15 years is not an unusual time before everything is in place. Furthermore, two major obstacles, which repeatedly have been noticed by the Project Team, restrict the GIS in becoming fully functional. The first issue is the absence of permanently employed staff in the GIS Unit, which will prevent any effort to maintain existing operational modus of the corporate GIS so far achieved. The second constraint is the absence of a reliable IT function and the remarkable paralysis establishing a reliable computer network in the Municipality. The network is the life blood system for all types of computerised activities, GIS included, and regrettably the situation has only become worse during the 2,5 year lifespan of the GIS Phase II Project.

The next step in the building of a municipal GIS will be a report addressed to the City Council prepared by the GIS Unit that proposes future actions to be taken in the field. If it is so decided, the Municipality will forward a request to Sida to receive further support.

TOP MANAGEMENT SEMINAR

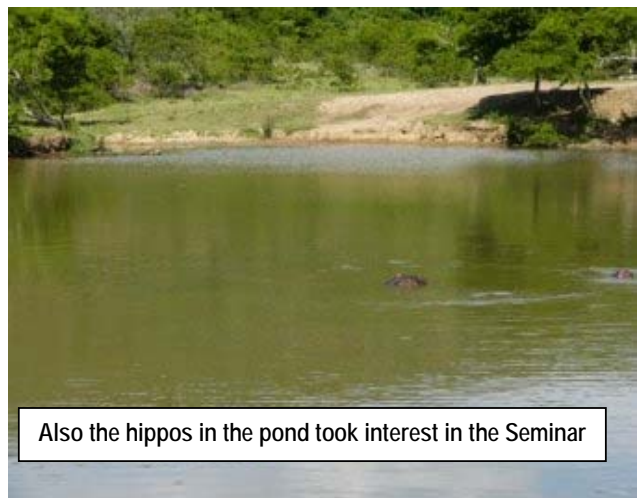
The Seminar was held at Mpongo Park on 19 November 2004.

The purpose of the seminar was to give the stakeholders

(Portfolio and Ward Councillors, Directors and General Managers, plus remaining members of the IT-GIS Task Team) an opportunity to:

- ❑ be informed about the achievements of the BCM GIS Phase 2 project;
- ❑ be aware of the roles and responsibilities of each directorate in the ongoing process to keep the BCM corporate GIS accurate, comprehensive and sustained;
- ❑ provide ideas how the BCM GIS Strategy should be revised;
- ❑ have the opportunity to influence future activities in the field.

The group discussions gave many valuable comments, which have been documented and been included in the Progress Report.



Finally, we would like to thank all staff members of BCM and others approached who helped us to make the Project so fruitful and contributing.

International Consultants



Christer Kjørneberg
Project Leader
+ 46 706 09 54 61



Magdalena Andersson
Systems Analyst
+ 46 26 63 49 48



Elisabeth Lundgren
Young Consultant/GIS Advisor
+ 46 26 63 38 14



Märit Walfridsson
Training Specialist
+ 46 26 63 38 34



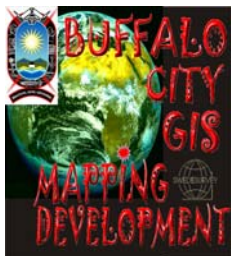
Erik Willén
Remote Sensing Specialist
+ 46 857 99 72 75



Maria Novén
GIS-Consultant
+ 46 063 55 12 35



Erik Jansson
Young Consultant
+27 73 231 1030



BACKGROUND

The Governments of South Africa and Sweden have signed an agreement concerning co-operation in the field of urban development. The overall objective of the agreement is to establish the framework for co-operation in order to reduce the physical and social effects of segregation and create a more integrated environment to benefit the urban poor. Swedesurvey has been given the responsibility to assist Buffalo City, South Africa, in building a comprehensive GIS that will support the objectives of the Integrated Development Planning. In the first phase GIS strategies were formulated which are being implemented during the second phase.

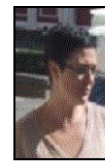
Local Consultants



Dylan Rawlins
GIS – Local Consultant
+27 83 407 6280



Pam Morris
GIS – Local Consultant
+27 82 678 7070



Suzi Crossley
GIS – Local Consultant
+27 83 216 9251



Melody Botya
GIS – Office Co-Ordinator
+ 27 83 368 3591



Sterling Underwood
GIS – Programme Developer



Mark Leach
GIS – Systems Developer

Buffalo City Staff



Phil Farrant
GIS – Manager
+27 43 705 3121



Staff Required
GIS – Technician
+27 43 705 3121



Staff Required
GIS – Office Co-Ordinator
+27 43 705 3121



Hombisa Simanga
GIS - Trainee
+2783 7191026



Cuelin Arnolds
GIS-Trainee
+2782 7499475



Raymond Lewis
GIS – Trainee