

NEWSLETTER 13

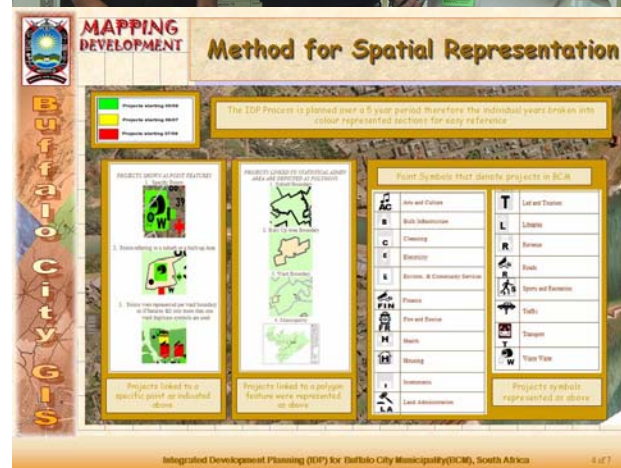
Dear Reader,

This newsletter presents progress up to end of July 2005, and is primarily intended for people involved in the project and might not give a complete picture of the project. The Newsletter is also found on the Buffalo City Intranet.

Please also note that the Newsletter has an informal character and that the content does not imply official endorsement by the Local Authority of Buffalo City (BCM).

If you have ideas or questions about the project, please contact christer.kjerneberg@swedesurvey.se

Achievement in GIS". This award is being given to users around the world in recognition of their outstanding work in the GIS field.



Continuous Support to GIS in BCM by SIDA !

The Mayoral Committee has, 31 May 2005, approved the findings and recommendations in the Final Report of the GIS phase II Project Jointly by BCM and Sida it has also been agreed on that the support to the GIS Unit will be extended. The extension -'BMC GIS Phase III'- will run for a period of 1,5 years. Besides from the development of some prioritized GIS applications, the focus will be to find innovative ways to strengthen the development of the corporate GIS and. In that work, the approved findings and recommendations in the Final Report will be the backbone.

Annual GIS User Conference

The Buffalo City GIS Project was represented at the ESRI's 25th Annual User Conference in San Diego, July 2005. The Conference is a massive gathering and was attended by more than 13,000 attendees from more than 130 countries. This year the Project presented two displays; one demonstrates how GIS is being used in Integrated Development Planning (IDP) and the other shows the Municipal Health Care GIS application, see extracts from the displays right. Buffalo City Council has also received a "Special



BACKGROUND

The Governments of South Africa and Sweden have signed an agreement concerning co-operation in the field of urban development. The overall objective of the agreement is to establish the framework for co-operation in order to reduce the physical and social effects of segregation and create a more integrated environment to benefit the urban poor. Swedesurvey has been given the responsibility to assist Buffalo City, South Africa, in building a comprehensive GIS that will support the objectives of the Integrated Development Planning.